

Phoenix Interiors
Casegood Collections
Impeccable Style & Incredible Value

Oakland Collection



Healthcare



Interiors



Laundries



Hospitality



Education

PHOENIX

Textiles + Interiors + Performance
800.325.1440 | www.phoenixtextile.com

Features and Finishes

Features

- Constructed of select hardwood maple solids and veneers
- High-pressure laminate tops with solid hardwood edging
- Vinyl-wrapped drawer boxes
- Ventilated backs
- European style concealed hinges
- Positive-stop drawer glides
- 7 year warranty

Finishes



Natural Maple



Milwork Cherry



Canyon Oak



Riverwood



Spiced Cherry



Harvest Brown



Cordovan



Warm Walnut



Deep Forest

Hardware Options



Oakland Standard Hardware,
Chrom Only



Hutton
Nickel Only



Leaf
Brass, Black, Nickel,
or Oil Rubbed Bronze



Fixed Bail
Brass, Black, Nickel,
or Oil Rubbed Bronze



Hensley
Brushed Nickel

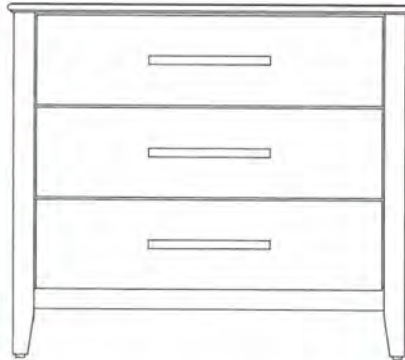
Collection Pieces



PTCA8H00
1 DOOR 1 DRAWER
BEDSIDE CABINET
23.5"W x 17.5"D x 29"H



PTCA8H01
3 DRAWER
BEDSIDE CABINET
23.5"W x 17.5"D x 29"H

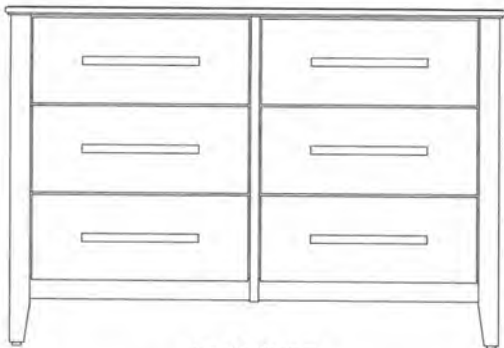


PTCA8H02
3 DRAWER CHEST
33.5"W x 17.5"D x 29"H



PTCA8H03
4 DRAWER CHEST
33.5"W x 17.5"D x 36.7"H

Oakland

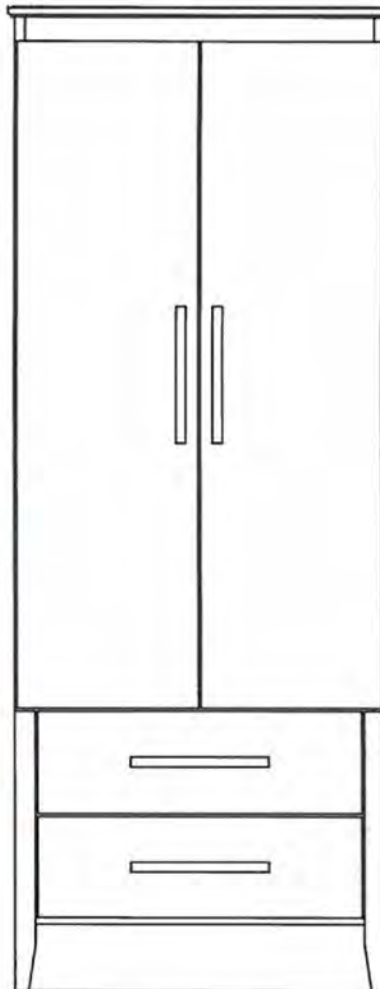


PTCA8H05
6 DRAWER DRESSER
43.3"W x 17.5"D x 29"H

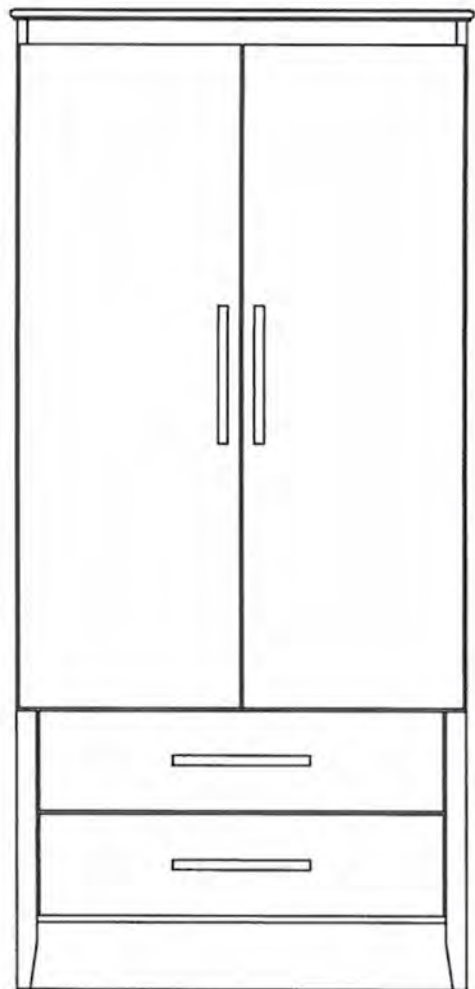


PTCA8H50H
36" HEADBOARD
36"W x 1.25"D x 22"H
PTCA8H50F
36" FOOTBOARD
36"W x 1.25"D x 16"H

ALSO AVAILABLE:
PTCA8H50H-42
42" HEADBOARD
42"W x 1.25"D x 22"H
PTCA8H50F-42
42" FOOTBOARD
42"W x 1.25"D x 16"H



PTCA8H22
2 DOOR 2 DRAWER WARDROBE
28"W x 25"D x 72"H
ALSO AVAILABLE:
PTCA8H20
2 DOOR WARDROBE
PTCA8H21
2 DOOR 1 DRAWER WARDROBE



PTCA8H82
2 DOOR 2 DRAWER WARDROBE
34"W x 25"D x 72"H
ALSO AVAILABLE:
PTCA8H81
2 DOOR 1 DRAWER WARDROBE